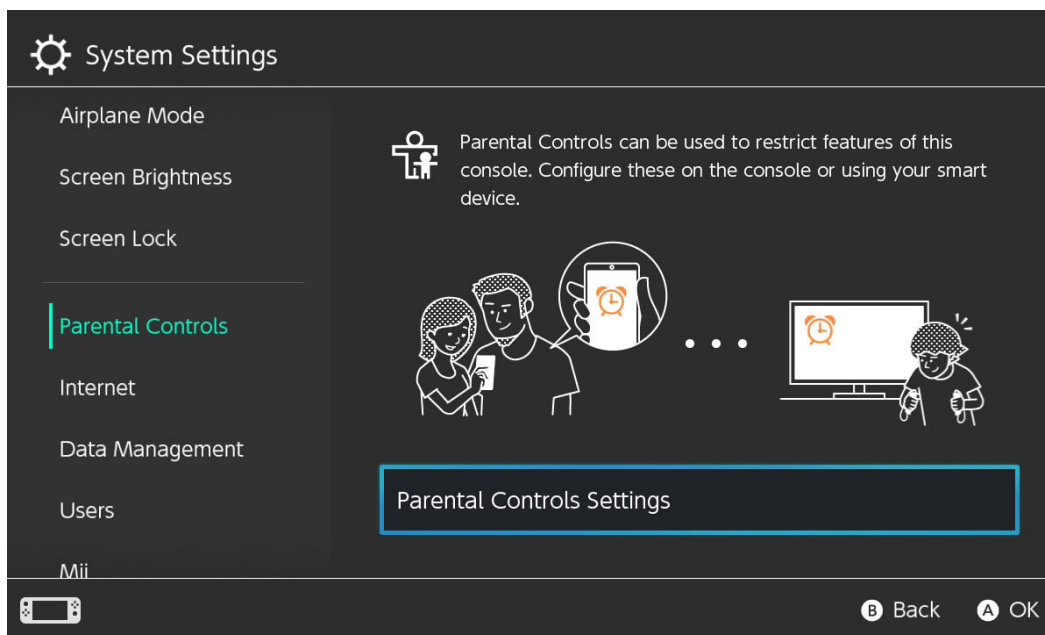
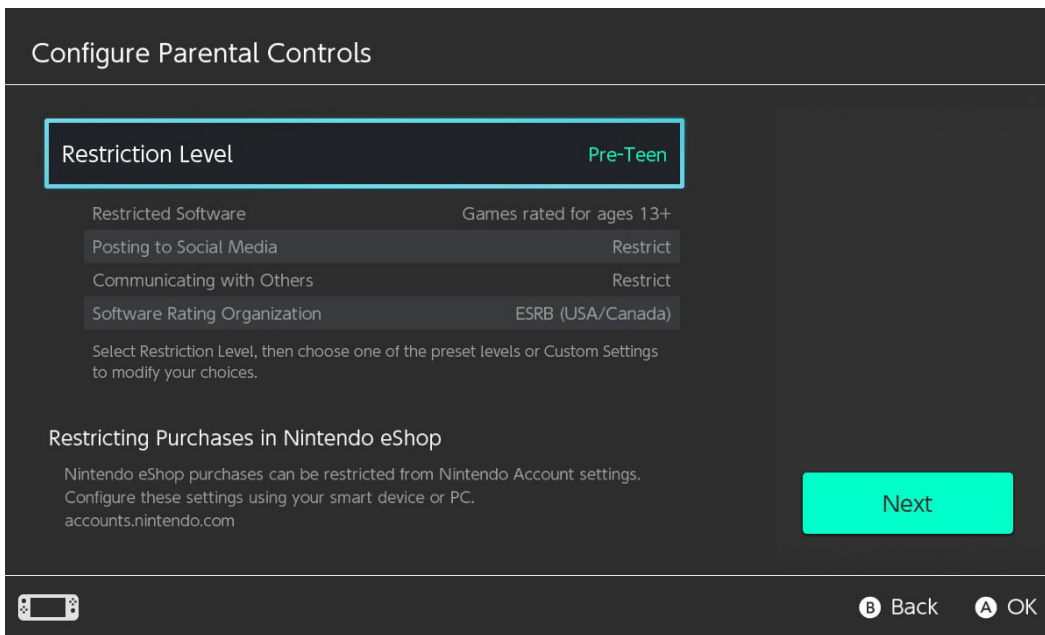
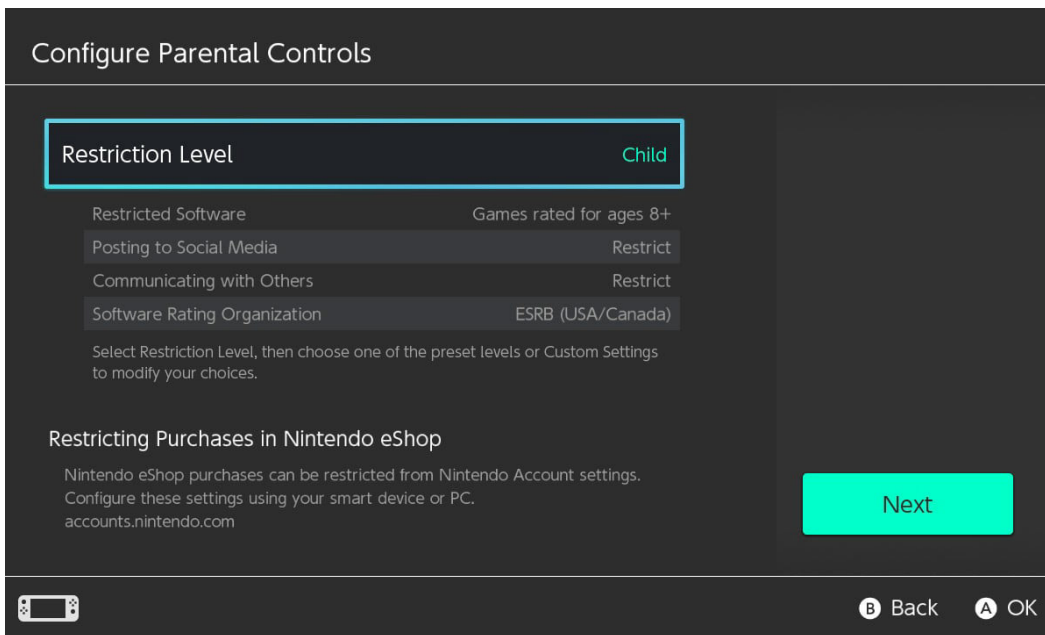


# How to Set Up Nintendo Switch Parental Controls

- 1 From the Switch home screen, go down to the right and select **System Settings**
- 2 Go down and select **Parental Controls**
  - You'll have the option to watch a **video explaining Switch Parental Controls**.
  - Go to **Parental Control Settings**.
  - You can select **Use Your Smart Device** to handle the settings remotely



- 3 Go to **Use This Console**
- 4 Go to **Restriction Level**
  - You can select the level of restriction on the console's settings based on your child's age range (**Teen, Pre-Teen, or Child**)



Gaming can be a fun and exciting part of a child's life. But, it can also expose children to content parents would rather they not see. With these parental controls for Nintendo Switch, you're covered.